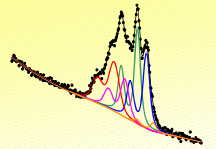


From the Measured Spectrum to the High Quality Presentation Using the Spectrum Processing and Analysis Software for Core Level Photoelectron Spectra UNIFIT 2006



Hesse, R., Szargan, R.

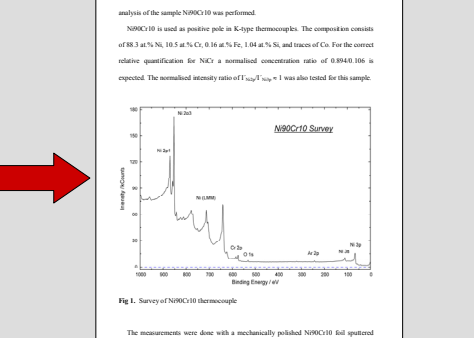
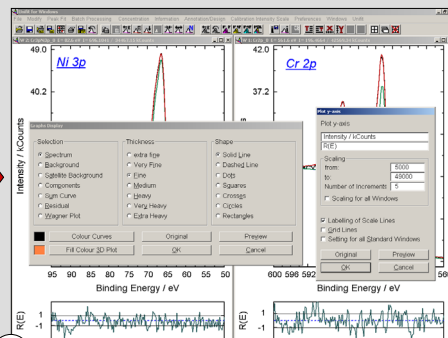
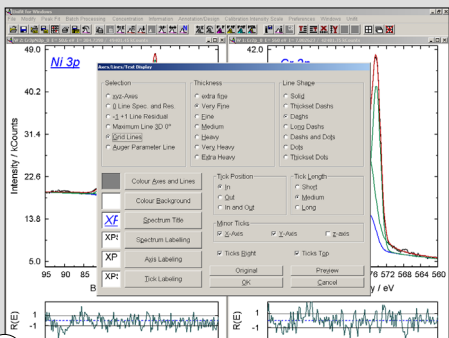
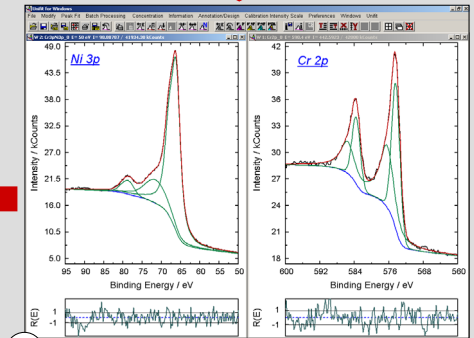
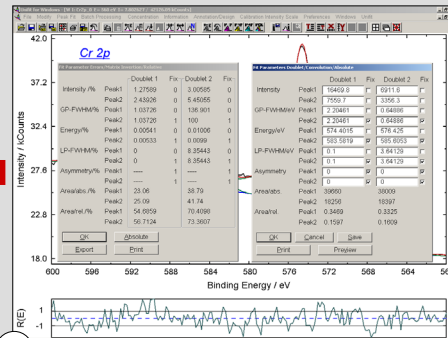
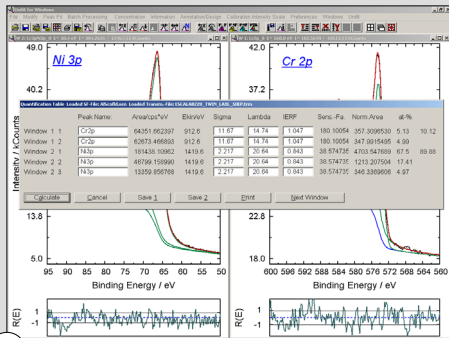
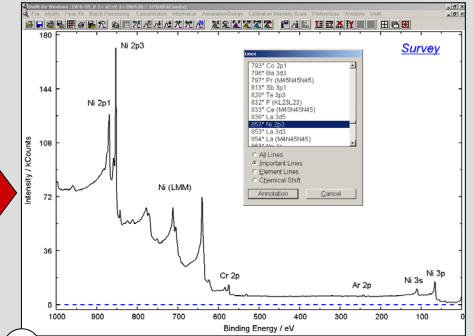
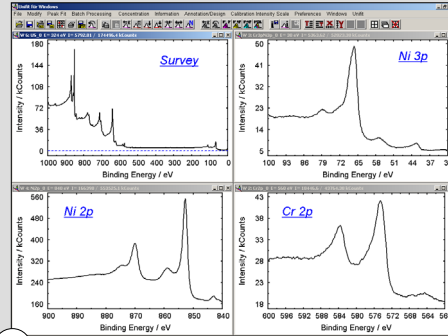
Wilhelm-Ostwald-Institut für Physikalische und Theoretische Chemie, Universität Leipzig, D-04103 Leipzig
 Website: www.uni-leipzig.de/~unifit Contact: rhesse@rz.uni-leipzig.de



Case study: Ni90Cr10 K-typ thermocouple

The new UNIFIT 2006 version combines extended data processing procedures with extensive design tools and a high resolution graphic export in the following steps:

1. Measured spectra: survey, Ni 3p, Ni 2p, Cr 2p
2. Element identification
3. Peak fit of Ni 3p and Cr 2p: convolution
4. Fit parameters and fit parameter errors of Cr 2p
5. Quantitative analysis using σ (Scofield), λ (NIST) and a predetermined transmission function
6. Design of the axes and lines, spectrum title and annotation, length and form of the ticks
7. Design of the curves and the scaling of the y-axis
8. High resolution export of the designed graphic and including in the Word-document with a resolution of 600 dpi.



Further examples for presentations created using UNIFIT 2006 and inserted in this Power Point poster:

